

Uremet Corporation™

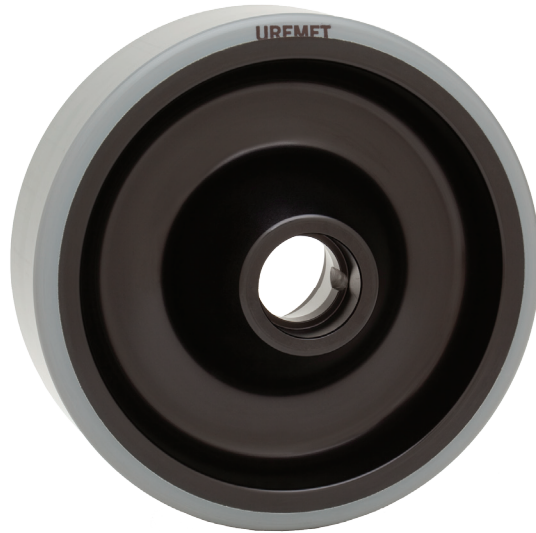
Replacement Road and Guide Wheels



Specifications

- Fits all Corkscrew, Boomerang and SLC type roller coasters
- Hard anodized finish protects bearing bores and seal area from corrosion and will reduce wear from repeated bearing removal and installation
- Wider tread reduces wear-fatigue and bond-line stress
- Solid billet 6061-T6 aluminum provides increased strength and durability compared to OEM cast aluminum wheels
- Bearings (cups and cones) are available for an additional charge
- **Orders ship immediately**
- **Uremet Tread**

Call (800) 845-9704



Road Wheel

230mm or 9.00" tread diameter



Guide Wheel

156mm, 160mm, 6.125" or 6.25" tread diameter

3026 South Orange Avenue
Santa Ana, CA 92707 USA
P: (800) 845-9704
F: (714) 641-0454
uremet.com



THE AMUSEMENT WHEEL PEOPLE